



LABOMED® 
ideas for vision





PRIMA ENT Microscope

Binocular Tube: 90° Binoculars. Optional 0-210° tiltable head

Eyepieces: WF 10X/18 mm with eye guards and dioptre lock mechanism. Optional: WF 12.5X/18 mm. Dioptre adjustment ± 5 mm with dioptre lock

Objective: f=250 mm. Optional: f=400mm, variable focal length from 287-487, WD 200-400mm

Magnichanger: 5 step (0.4X, 0.6X, 1.0X, 1.6X, 2.5X).

Magnification: 10X Eyepieces (2.7X, 4.1X, 6.8X, 10.9X, 17X)
12.5X Eyepieces (3.4X, 5.1X, 8.5X, 13.6X, 21.3X)

Vertical Movement of Arm: 500 mm, power saving feature with light cut-off at park position

Built-in Filters: Yellow, Green

Fine Focus: Manual, through objective adjustment knob
Optional: Motorized, range 40 mm

Light Source: 50 watt LED with 100K LUX

Optional Accessories: Beam Splitters (Straight, Inclined), Range of Camera Adaptors, 6MP HD Camera with 30 fps (@1080p), Rotoplate, Double Iris, Assistant Binoculars

PRIMA ENT Mu Microscope

Binocular Tube: 90° Binoculars. Optional 0-210° tiltable head

Eyepieces: WF 10X/18 mm with eye guards and dioptre lock mechanism. Optional: WF 12.5X/18 mm. Dioptre adjustment ± 5 mm with dioptre lock

Objective: f=250 mm with objective lens protector. Optional: f=400mm, variable focal length from 287-487, WD 200-400mm

Magnichanger: 3 step (0.6X, 1.0X, 1.6X).

Magnification: 10X Eyepieces (4.1X, 6.8X, 10.9X) 12.5X Eyepieces (5.1X, 8.5X, 13.6X)

Vertical Movement of Arm: 500 mm, power saving feature with light cut-off at park position

Built-in Filters: Yellow, Green

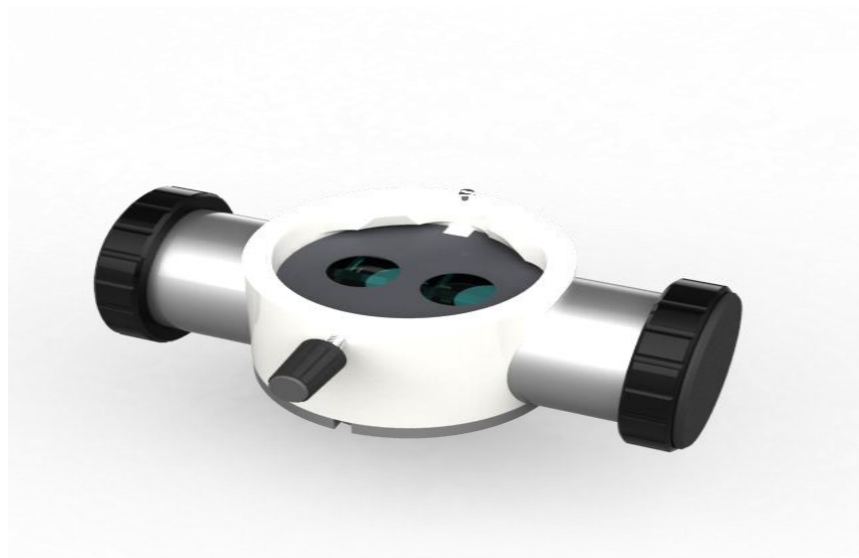
Fine Focus: Manual, through objective adjustment knob
Optional: Motorized, range 40 mm

Light Source: 50 watt LED with 80K LUX

Optional Accessories: Beam Splitters (Straight, Inclined), Range of Camera Adaptors, 6MP HD Camera with 30 fps (@1080p), Rotoplate, Double Iris, Assistant Binoculars



Microscope Accessories



Double Beam Splitter



Camera Adaptors



Double Iris Diaphragm



Vega HD Camera